

PART OF N.E. 1/4 OF SEC 13, T.6N., R.1E., S.L.B. & M.

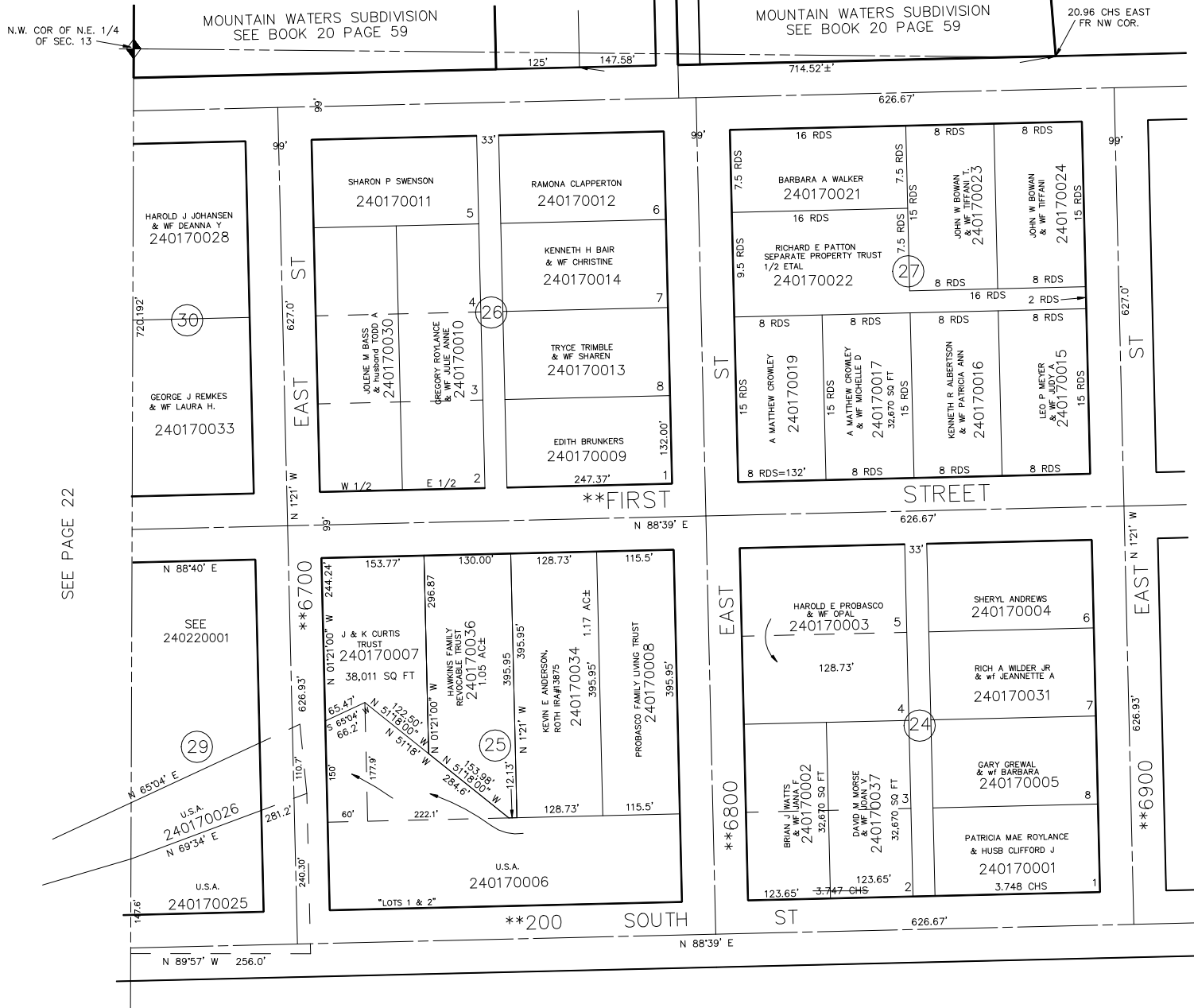
HUNTSVILLE SURVEY

BLOCKS 24 TO 27, 29 & 30, PLAT A

TAXING UNIT: 35

SCALE 1" = 120'

SEE BOOK 20, PAGE 10



SEE PAGE 21

*NOTE: STREET NUMBERS ACCORDING TO COUNTY SURVEYOR

**STREET NAME CHANGE SEE E#2195484

SEE PAGE 22

SEE PAGE 16

N.W. COR OF N.E. 1/4 OF SEC. 13

MOUNTAIN WATERS SUBDIVISION SEE BOOK 20 PAGE 59

MOUNTAIN WATERS SUBDIVISION SEE BOOK 20 PAGE 59

20.96 CHS EAST FR NW COR.